

FOR LEASE

\$3.00 / SF NNN



190 Washington Blvd, Fremont, CA 94539

Free standing building @ corner of Washington Blvd & Ellsworth St with large parking lot

± 2,126 SF | More info www.190WashingtonBlvd.com



Tim Vi Tran, SIOR, CCIM

510 213 8883 | tim@ivycommercial.com

CA DRE # 01784630

PROPERTY HIGHLIGHTS

Building Size: ± 2,126 square feet

Lot Size: ± 10,381 square feet, 0.238 acres

Location: Easy convenient access to transportation, restaurants, groceries, schools, residential homes, etc. One block from Ohlone College and Mission Blvd

Accessibility: Easy access to freeways 237, 680 and 880

Public Transportation: Walking distance to bus stops

FREMONT, CA HIGHLIGHTS

Home to Numerous High Tech Companies: Tesla, SeaGate, Facebook, Lam Research, Western Digital, etc

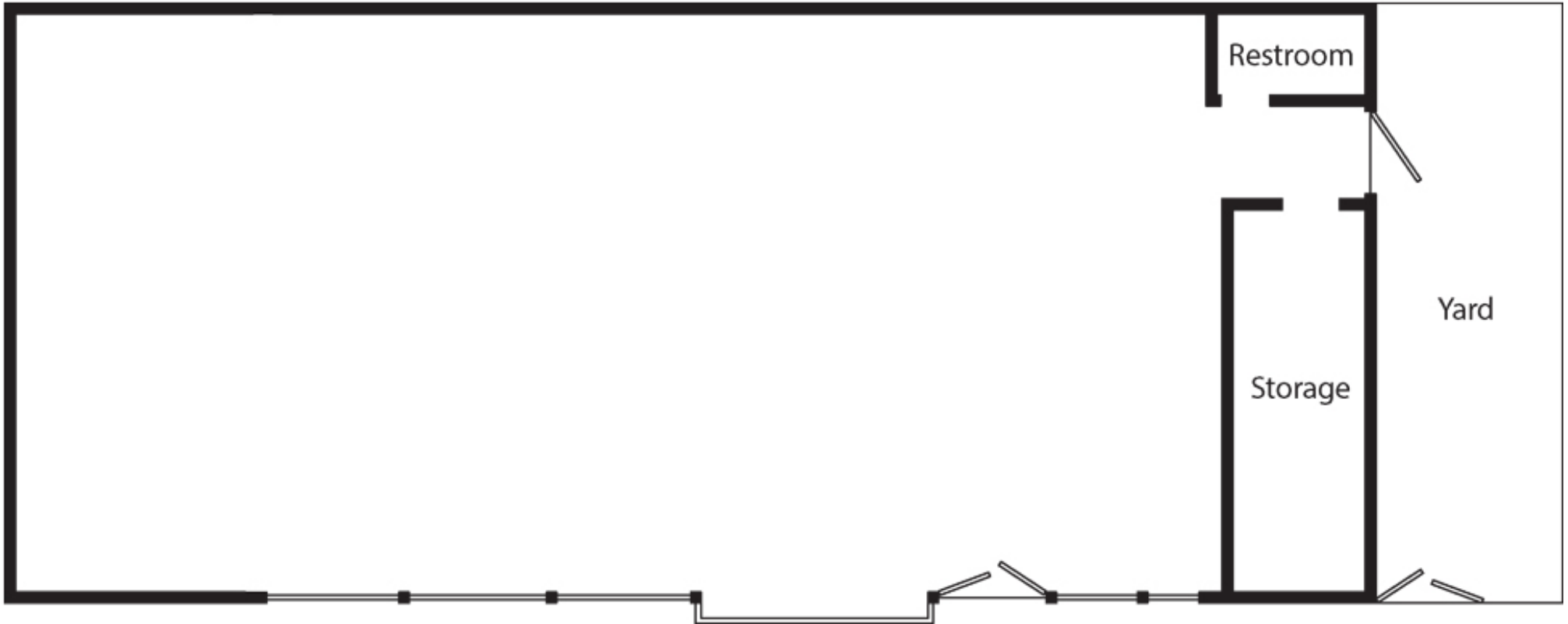
Airports: San Jose International Airport, Oakland International Airport

Best City Ranking: Fremont, CA ranks #1 as the best city to raise a family in 2022 by WalletHub

Happiest City Ranking: Fremont, CA ranks #1 as the happiest city in America in 2022 by WalletHub

Household Income: Located in affluent community with high disposable spending income

FLOOR PLAN

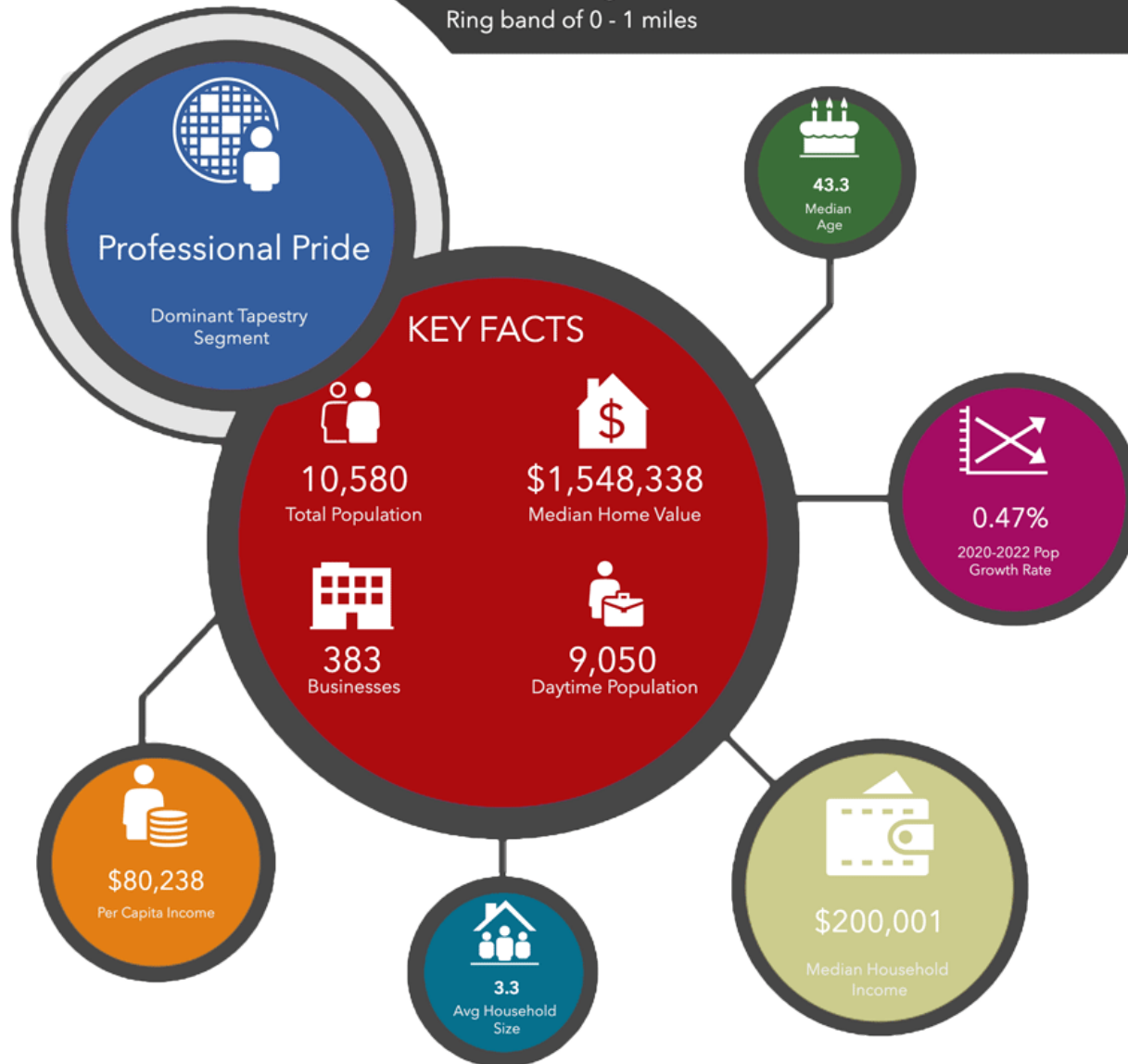


PHOTOS

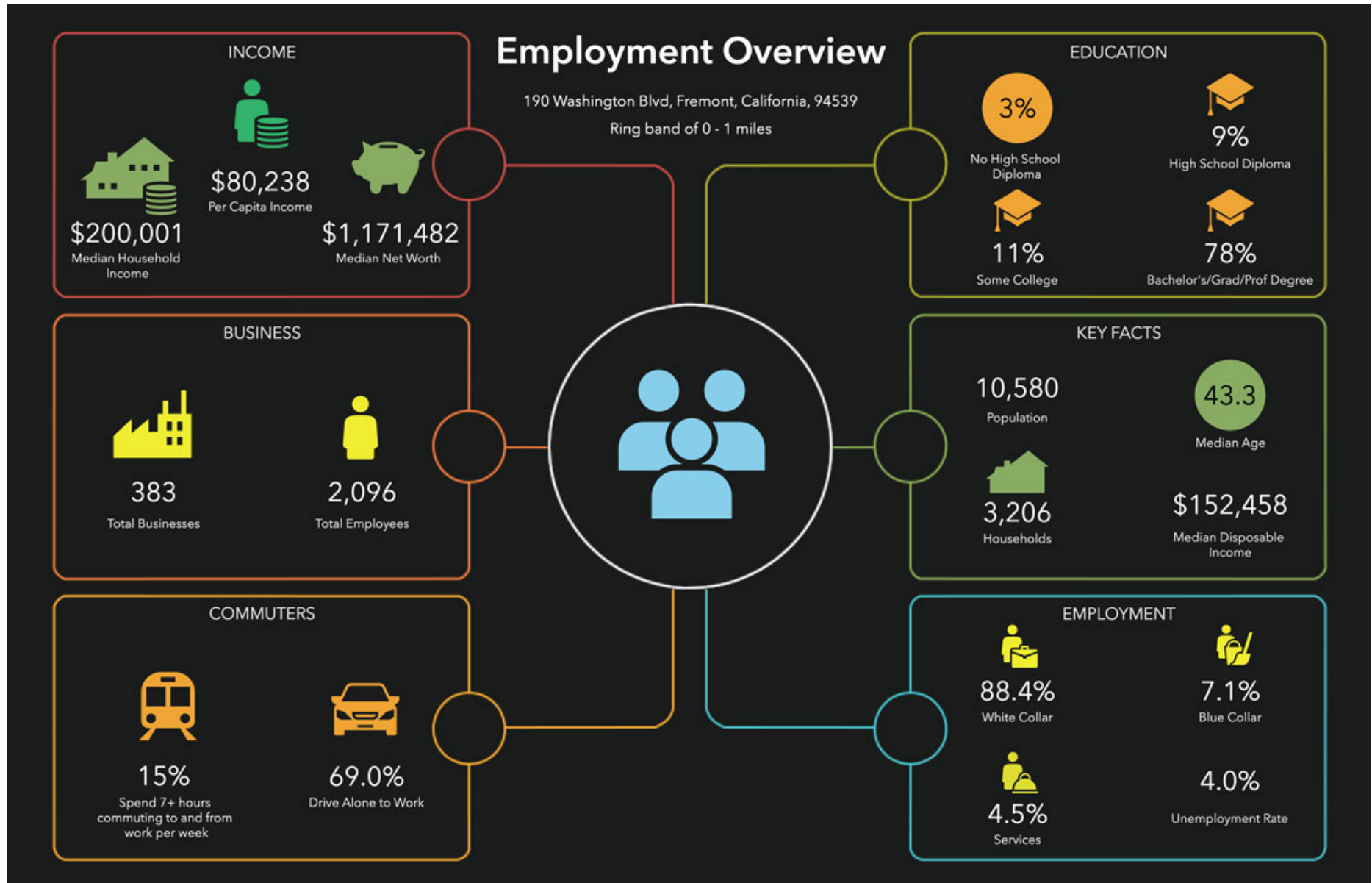


DEMOGRAPHICS

190 Washington Blvd, Fremont, California, 94539
Ring band of 0 - 1 miles



DEMOGRAPHICS



VIBRANT

SUSTAINABLE

Fremont's future is ...

SAFE

INNOVATIVE

Contact Exclusive Agents for Details

Tim Vi Tran, SIOR, CCIM

tim@ivycommercial.com

www.ivycommercial.com

510 213 8883

39488 Stevenson Place, Suite 100

Fremont, CA 94539

CA DRE #01526630

www.190WashingtonBlvd.com